

Eltjo de Lang

—

On a poem

—

Saxophone quartet | baritone saxophone

On a poem

Saxophone quartet | baritone saxophone

Eltjo de Lang

1. Introduction / Inleiding

1 $\text{♩} = 80$

mf

5 2

9 3

14

20 4

26 5

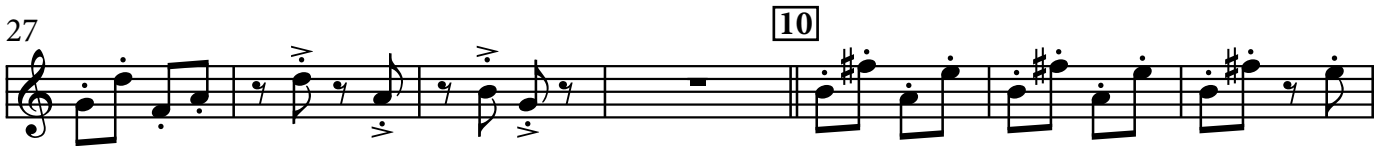
30 6

34 *ritenuto* -----

dim.

2. Playful / Speels

7 ♩ = 96



54



3. Sleeping and dreaming / Slapen en dromen

[13] ♩ = 72



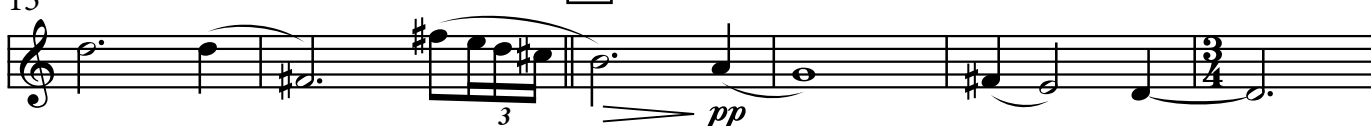
8

[14]



15

[15]



21

[16]

(ossia 8^{va})



28

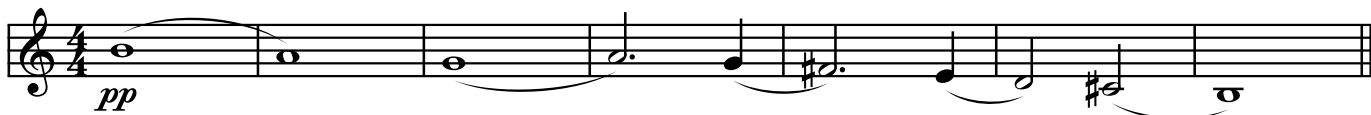
[17]



35

[18]

ritenuto



4. Canonical / Canonisch

19 $\text{♩} = 92$
mp

5 20 *ritenuto* a.t.
f

9 21 *mf* 22 *f* *mf*

13 *f* *mf*

17 *ritenuto* 8^{va} 23 a.t. Bar.-sax.
(Alt.) *mp*

21 24

25 *ritenuto* a.t. 25 *mf* *f*

28 26 *f* *mf*

32 *rallentando* 27 a.t.

mf *mp* *p* *mp*

This musical staff contains measures 32 through 35. It begins with a treble clef and a key signature of one sharp (F#). The tempo marking is *rallentando*. Measure 32 starts with a *mf* dynamic. Measure 33 has a *mp* dynamic. Measure 34 has a *p* dynamic. Measure 35 has a *mp* dynamic. A rehearsal mark 27 is placed above the staff at the beginning of measure 35, with the marking 'a.t.' (ad libitum) to its right.

36 28

This musical staff contains measures 36 through 39. It continues with the same treble clef and key signature. The dynamics are not explicitly marked in this section.

40 *ritenuto* 29 a.t.

mf *f*

This musical staff contains measures 40 through 42. It begins with a treble clef and a key signature of one sharp. The tempo marking is *ritenuto*. Measure 40 has a *mf* dynamic. Measure 41 has a *f* dynamic. A rehearsal mark 29 is placed above the staff at the beginning of measure 41, with the marking 'a.t.' (ad libitum) to its right. There are sixteenth-note runs in measures 41 and 42, with a '6' (sixteenth notes) marking above them.

43

ff

This musical staff contains measures 43 through 45. It continues with the same treble clef and key signature. Measure 43 has a *ff* dynamic. There are sixteenth-note runs in measures 43 and 44, with a '6' (sixteenth notes) marking above them.

